

# Data Center

## MPO/MTP Cables



[www.starlinkit.com](http://www.starlinkit.com)

## MPO / MTP Trunk Cable Assemblies

### Features

- ◆ MPO / MTP connector or MPO hybrid interface patchcord.
- ◆ Available from 12 to 144 fiber Trunk cable, counts in increments of 12 fibers. Available in multi-mode (62.5/125, 10G OM2 / OM3 / OM4, Bend-insensitive fiber, etc.) and single-mode (G652D, G657A1 etc.) fiber types
- ◆ Generic connector interface available in Simplex or Duplex LC, SC, etc
- ◆ Customized dual shelf reel and pulling eye keep connectivity protected during payout
- ◆ Comply with Telcordia GR-1435-CORE, GR-326-CORE, RoHS

### Applications

- ◆ For installation in horizontal patch extension from consolidation point to the workstation outlets
- ◆ High Density Fiber Management
- ◆ DACS
- ◆ LAN/WAN Premises



## MPO MTP Cable Assemblies

### Features

- ◆ MPO / MTP connector interface patchcord
- ◆ Choices of different cable structure to cater for different installation needs. Available in 4/8/12/24/48 cable fibers from round or ribbon optical cable
- ◆ Improves and simplifies fiber routing, decreases fiber management space
- ◆ Comply with IEC 61754-7, Telcordia GR-1435-CORE, RoHS



### Applications

- ◆ For installation in horizontal patch extension from consolidation point to the workstation outlets
- ◆ High Density Fiber Management
- ◆ Telecommunications networks and Broadband / CATV networks
- ◆ DACS
- ◆ LAN/WAN Premises



MPO / MTP to SC Hydra Cable



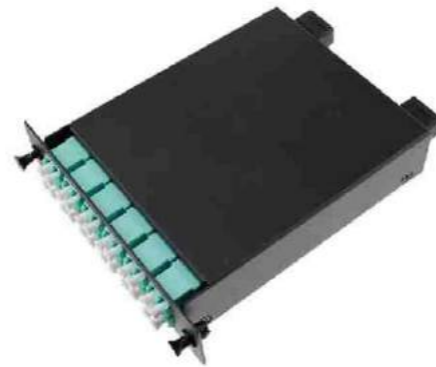
MPO / MTP Harness Cable



## **MPO / MTP Cassette Module**

### **Features**

- ◆ High-density and small design, Easy and fast installation
- ◆ Available in 12 / 24 / 48 fiber versions
- ◆ Field connections with guaranteed quality and simplifies fiber routing
- ◆ Modular system management, easy reconfiguration for moves, adds, and changes
- ◆ Customized fiber polarity in the module



### **Applications**

- ◆ Data Centre Infrastructure
- ◆ High Density Fiber Management
- ◆ Telecommunications networks and Broadband / CATV networks
- ◆ LAN/WAN Premises

