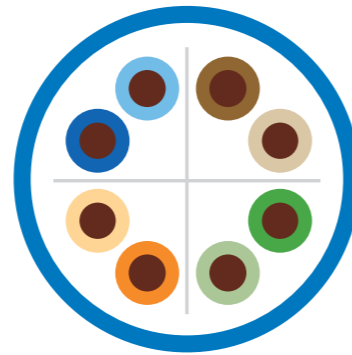


LAN CABLE Category 6 Unshield



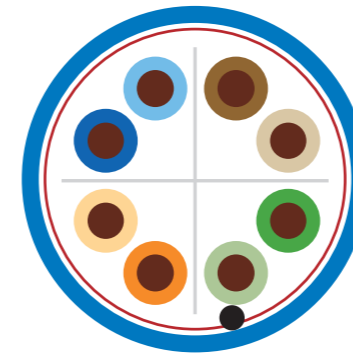
Category 6 U/UTP 250Mhz Cable UNSHIEDED COPPER CABLING SYSTEM

DESCRIPTION	SPECIFICATION														
<p>LANSAN Category 6 U/UTP 250Mhz Cable be used to Upgrade Category 5E system provide higher transmission, at least twice than CAT5E.</p> <p>Center Cross design to against the NEXT and provide more stable performance.</p> <p>Big Pulling Hole Design allows installer to lay 10 Boxes in the meantime without jam issues.</p> <p>Combined with Un-Shield Keystone, Patch Cords and Patch Panel, it provides excellent compatible performance.</p>	<table border="0"> <tr> <td>Conductor</td> <td>23AWG, Solid Copper</td> </tr> <tr> <td>Insulation</td> <td>High Density Polyethylene (HDPE)</td> </tr> <tr> <td>Outer Sheath</td> <td>Polyvinyl Chloride (PVC)</td> </tr> <tr> <td>Installation Temperature</td> <td>0°C ~ +50°C</td> </tr> <tr> <td>Operating Temperature</td> <td>-20°C ~ +60°C</td> </tr> <tr> <td>Installation Min Bend Radius</td> <td>70mm</td> </tr> <tr> <td>Operating Min Bend Radius</td> <td>40mm</td> </tr> </table>	Conductor	23AWG, Solid Copper	Insulation	High Density Polyethylene (HDPE)	Outer Sheath	Polyvinyl Chloride (PVC)	Installation Temperature	0°C ~ +50°C	Operating Temperature	-20°C ~ +60°C	Installation Min Bend Radius	70mm	Operating Min Bend Radius	40mm
Conductor	23AWG, Solid Copper														
Insulation	High Density Polyethylene (HDPE)														
Outer Sheath	Polyvinyl Chloride (PVC)														
Installation Temperature	0°C ~ +50°C														
Operating Temperature	-20°C ~ +60°C														
Installation Min Bend Radius	70mm														
Operating Min Bend Radius	40mm														
FEATURES	STANDARDS COMPLIANCE														
<ul style="list-style-type: none"> * Independently tested and verified by ETL * Guaranteed to meet TIA 568 C.2 and ISO/IEC 11801 specifications * Center Cross Design * Big Pulling Hole Design 	<ul style="list-style-type: none"> * TIA 568 C.2 * ISO 11801 CLASS E * ETL approved * UL Listed 														

ORDERING INFORMATION

Part No.	Description
L096 **	LS-6 U/UTP Cat.6 PVC CM Blue 305m/Box
L096R **	LS-6 U/UTP Cat.6 PVC CMR Brown 305m/ Box
L096P **	LS-6 U/UTP Cat.6 PVC CMP Red 305m/ Box
L096L **	LS-6 U/UTP Cat.6 LSZH Green 305m/ Box

LAN CABLE Category 6 Shield



Category 6 F/UTP 250Mhz Cable SHIEDED COPPER CABLING SYSTEM

DESCRIPTION	SPECIFICATION																
<p>LANSAN Category 6 F/UTP 250Mhz Cable be used to Upgrade Category 5E system provide higher transmission, at least twice than CAT5E.</p> <p>Center Cross design to against the NEXT and provide more stable performance.</p> <p>Big Pulling Hole Design allows installer to lay 10 Boxes in the meantime without jam issues.</p> <p>Combined with Shield Keystone, Patch Cords and Patch Panel, it provides excellent compatible performance.</p>	<table border="0"> <tr> <td>Conductor</td> <td>23AWG, Solid Copper</td> </tr> <tr> <td>Insulation</td> <td>High Density Polyethylene (HDPE)</td> </tr> <tr> <td>Shield</td> <td>Overall Aluminum Foil Tape / Drain Wire</td> </tr> <tr> <td>Outer Sheath</td> <td>Polyvinyl Chloride (PVC)</td> </tr> <tr> <td>Installation Temperature</td> <td>0°C ~ +50°C</td> </tr> <tr> <td>Operating Temperature</td> <td>-20°C ~ +60°C</td> </tr> <tr> <td>Installation Min Bend Radius</td> <td>70mm</td> </tr> <tr> <td>Operating Min Bend Radius</td> <td>40mm</td> </tr> </table>	Conductor	23AWG, Solid Copper	Insulation	High Density Polyethylene (HDPE)	Shield	Overall Aluminum Foil Tape / Drain Wire	Outer Sheath	Polyvinyl Chloride (PVC)	Installation Temperature	0°C ~ +50°C	Operating Temperature	-20°C ~ +60°C	Installation Min Bend Radius	70mm	Operating Min Bend Radius	40mm
Conductor	23AWG, Solid Copper																
Insulation	High Density Polyethylene (HDPE)																
Shield	Overall Aluminum Foil Tape / Drain Wire																
Outer Sheath	Polyvinyl Chloride (PVC)																
Installation Temperature	0°C ~ +50°C																
Operating Temperature	-20°C ~ +60°C																
Installation Min Bend Radius	70mm																
Operating Min Bend Radius	40mm																
FEATURES	STANDARDS COMPLIANCE																
<ul style="list-style-type: none"> * Independently tested and verified by ETL * Guaranteed to meet TIA 568 C.2 and ISO/IEC 11801 specifications * Center Cross Design * Big Pulling Hole Design 	<ul style="list-style-type: none"> * TIA 568 C.2 * ISO 11801 CLASS E * ETL approved * UL Listed 																

ORDERING INFORMATION

Part No.	Description
L096F **	LS-6 F/UTP Cat.6 PVC CM Blue 305m/Drum
L096RF **	LS-6 F/UTP Cat.6 PVC CMR Brown 305m/Drum
L096PF **	LS-6 F/UTP Cat.6 PVC CMP Red 305m/Drum
L096LF **	LS-6 F/UTP Cat.6 LSZH Green 305m/Drum